

Peritoneal Dialysis  
Momodou Mbye  
ELE 282  
November 22, 2005

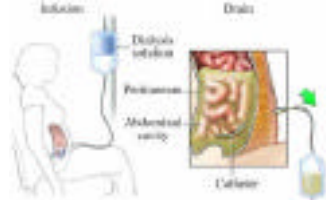
## Peritoneal Dialysis

### Introduction

Most people know that a major function of the kidneys is to remove waste products and excess fluid is removed through the urine. The production of urine involves highly complex steps of excretion and re-absorption. This process is necessary to maintain a stable balance of body chemicals.

The kidneys perform the following function  
1. Remove waste products from the body  
2. Remove drugs from the body  
3. Balance the body's fluids  
4. Release hormones that regulate blood pressure  
5. Produce and active form of vitamin D that promotes strong, healthy bones  
6. Controls the production of red blood cells

### Picture of the kidney



### What is Peritoneal Dialysis (PD) and how does it work

Peritoneal Dialysis is the form of dialysis that removes the waste in the body. Works by using the body peritoneal membrane, which is inside the abdomen as a semi-permeable membrane. Special solutions that help remove toxins are infused in, remain in the abdomen for a time, and then are drained out.

The benefits are that during exchange one can read, talk or watch television or sleep in the convenient of once home, office ore even when traveling.



### Facts

Nearly half of the people with an advanced form of kidney disease do not know that they have it recent research published by the American journal of kidney disease, and the official journal of the national kidney foundation kidney.

### Statistics

20 million Americans -1 in 9 US adults have chronic kidney disease and another 20 million more at increase risk People at High risk are those that include ,heart disease, hypertension ,diabetes, Family history

### **What are the benefits of using HomeChoice Pediatric?**

It improves patient ease-of-use

- Built in comprehensive internal alarm system which increased protection against false alarms
- Advanced overflow protection and fluid management
- Exclusive PD Link software, which enables the physician to remotely monitor therapy and modify prescriptions as needed. Data is transmitted via modem and/or the PRO Card.
- Enhanced problem identification and monitoring of patient compliance
- Provides physicians with one PD machine suitable for both their adult and pediatric patients
  - Credits
  - [www.aakp.org](http://www.aakp.org) ,[www.kidneyfund.org](http://www.kidneyfund.org)
  - [www.kidneyfund.org](http://www.kidneyfund.org),[www.lifeoptions.org](http://www.lifeoptions.org),
  - [www.kidneyschool.org](http://www.kidneyschool.org) ,[www.kidney.org](http://www.kidney.org)
  - [www.aakp.org](http://www.aakp.org)