



SBC Tools Demo

How to use SBC Tools to
develop C project on
MCF5208EVB?

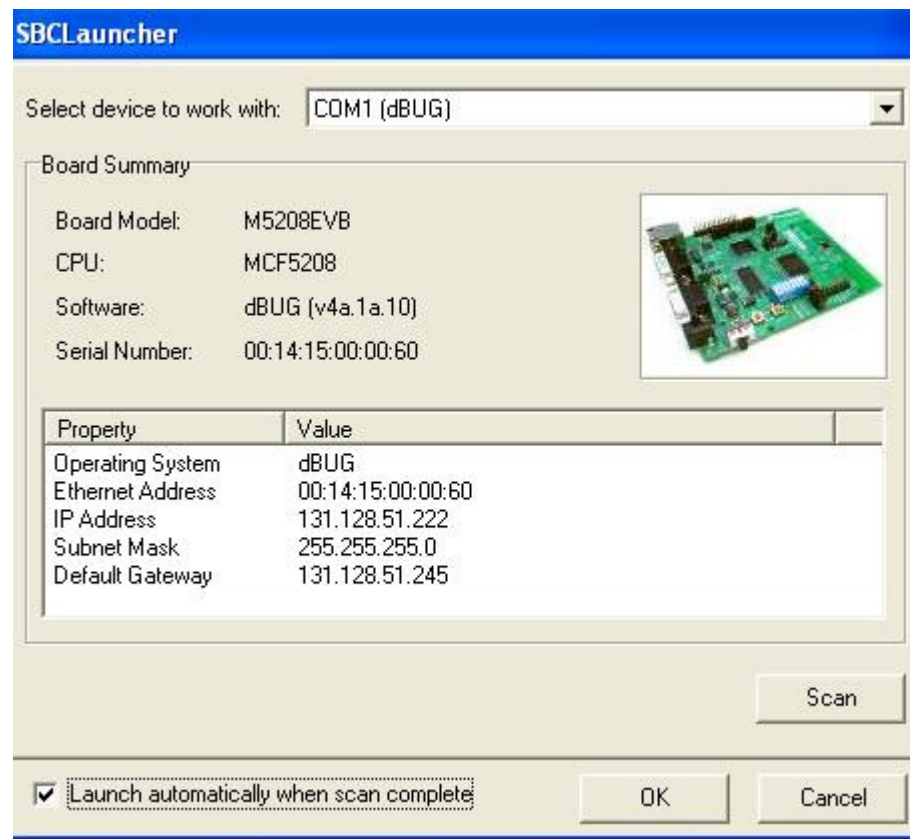


Hardware and Software

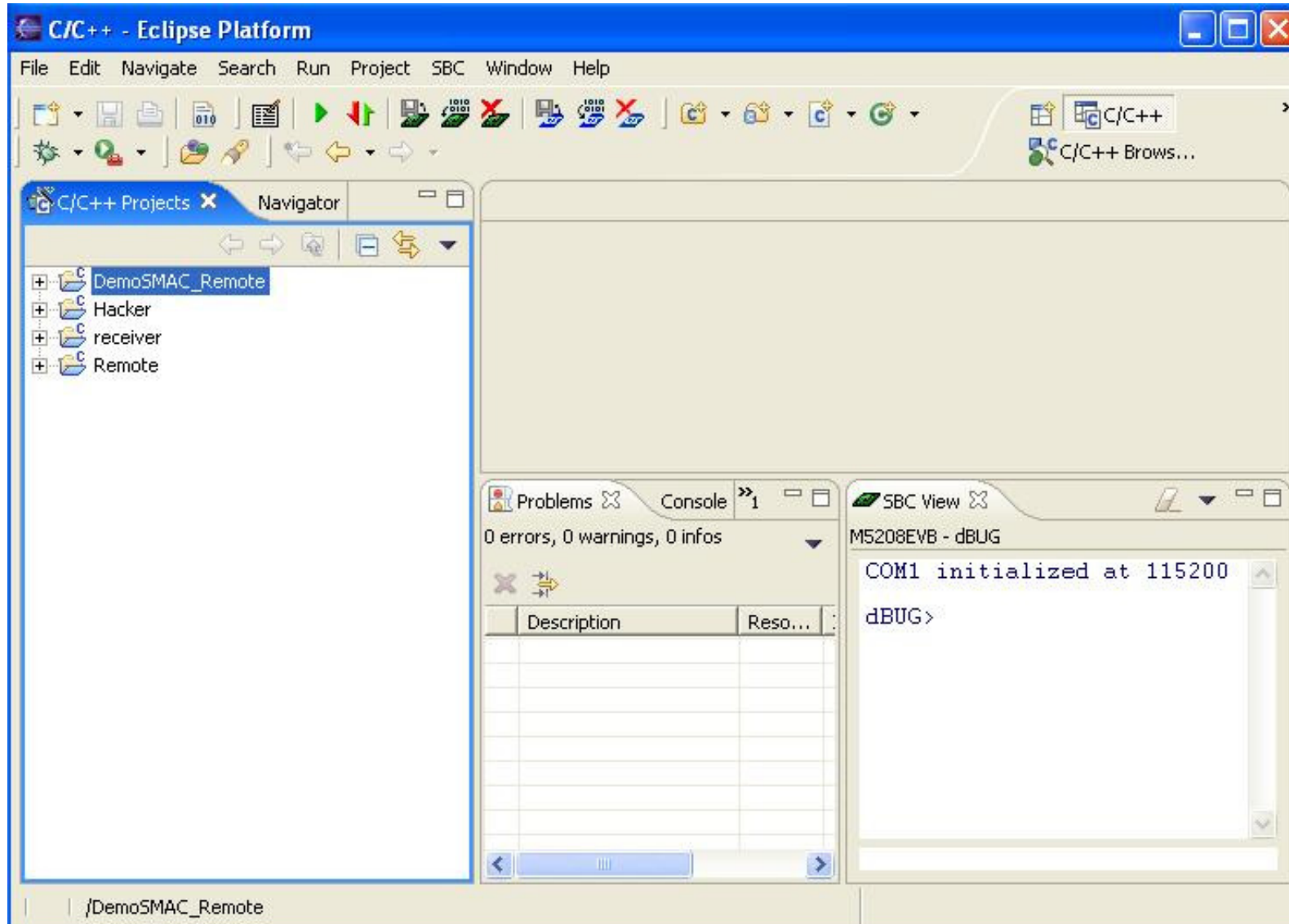
- MCF5208EVB
- SBC Tools
- Cables

Running SBC Tools

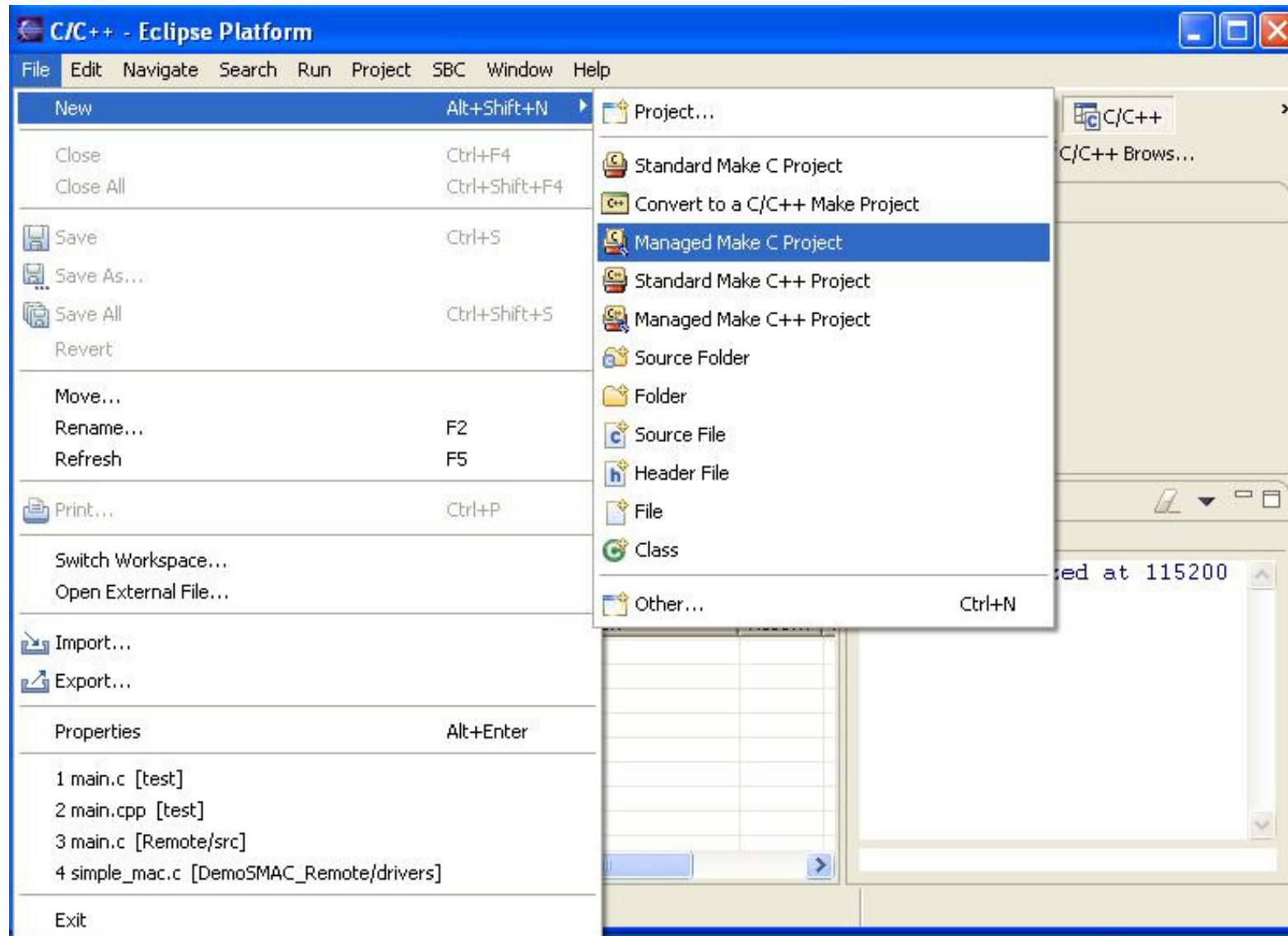
- On Windows XP, Start->All Programs->SBCToolsV2->SBCToolsV2



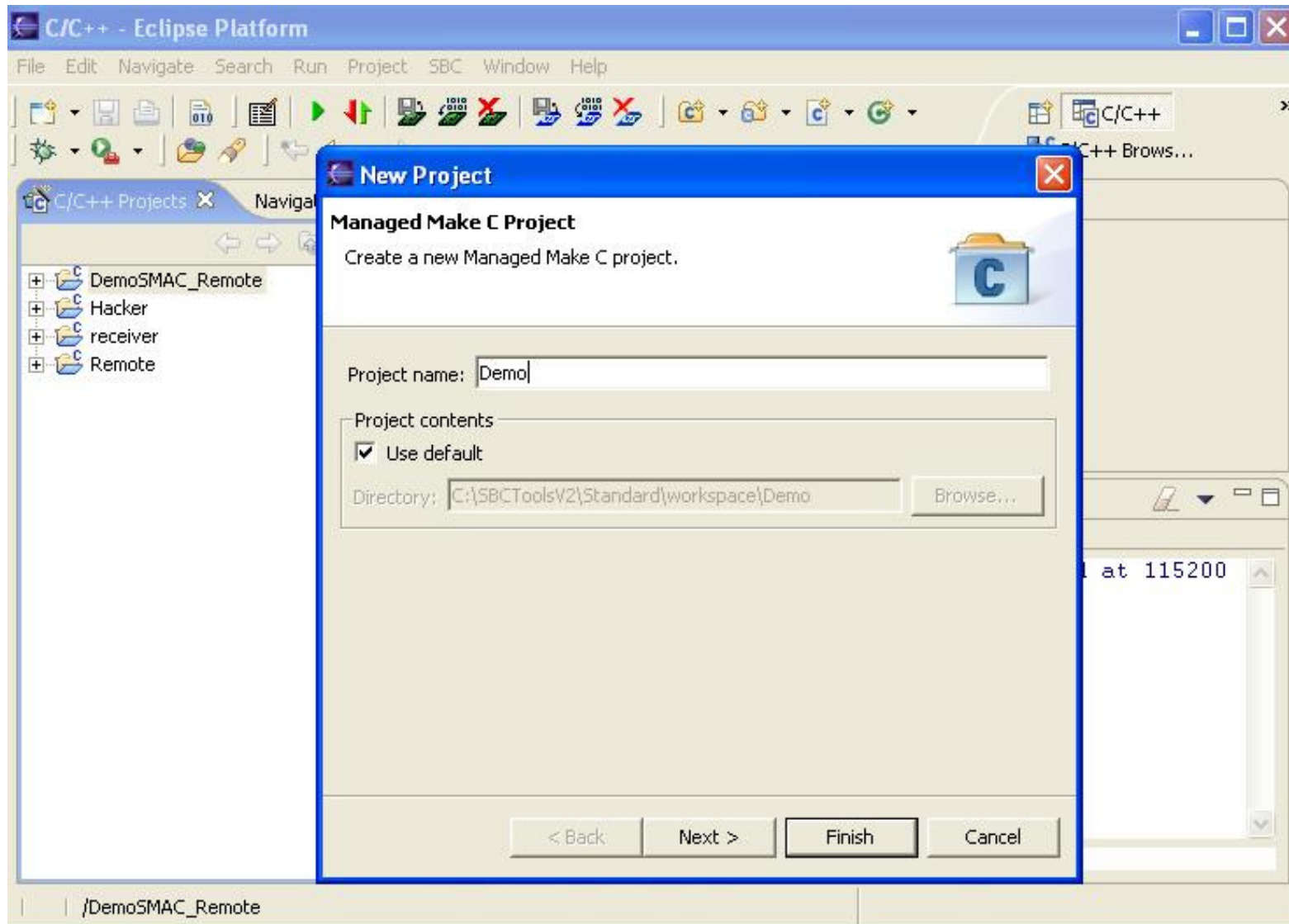
SBC Tools IDE



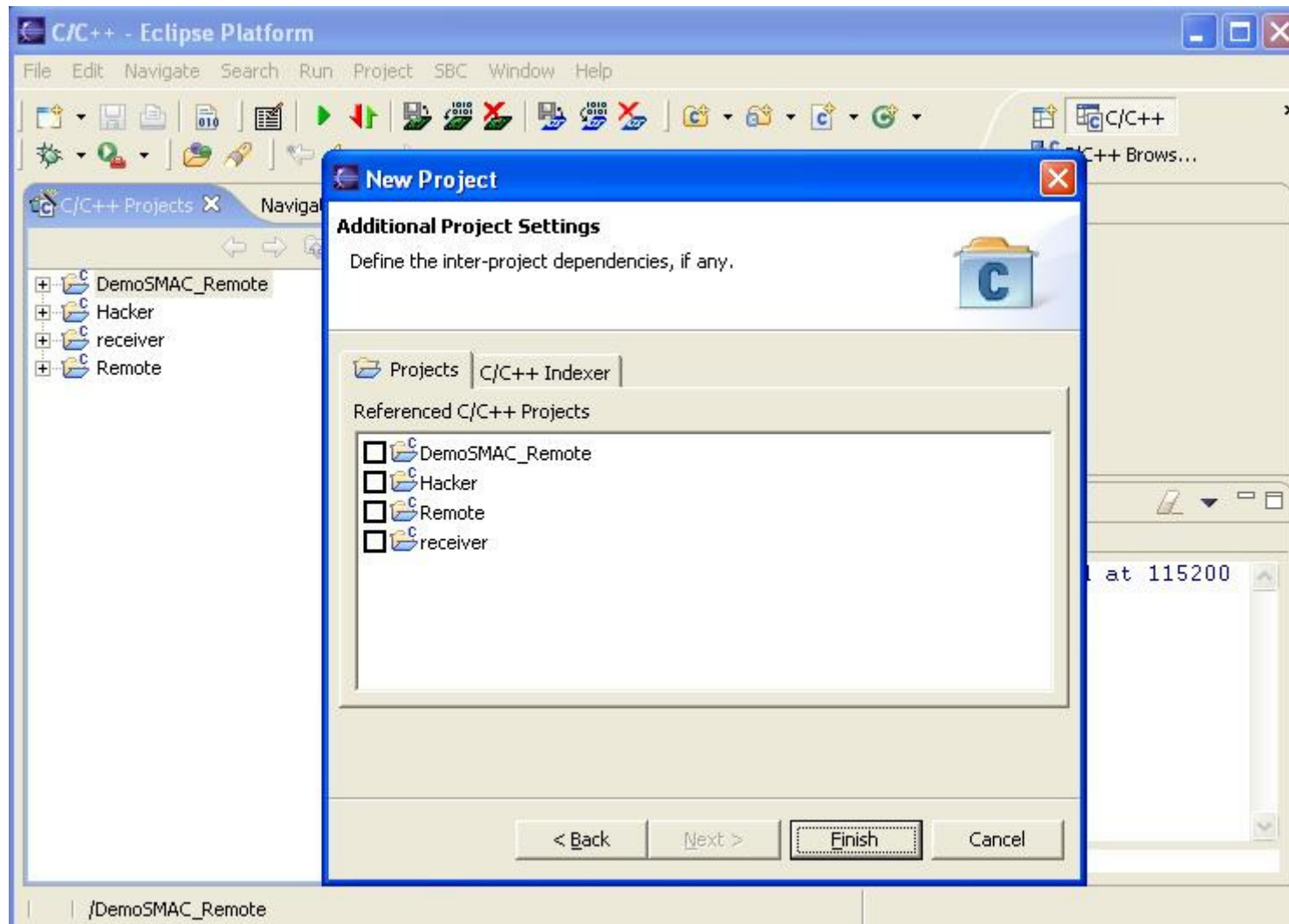
Create a demo C project



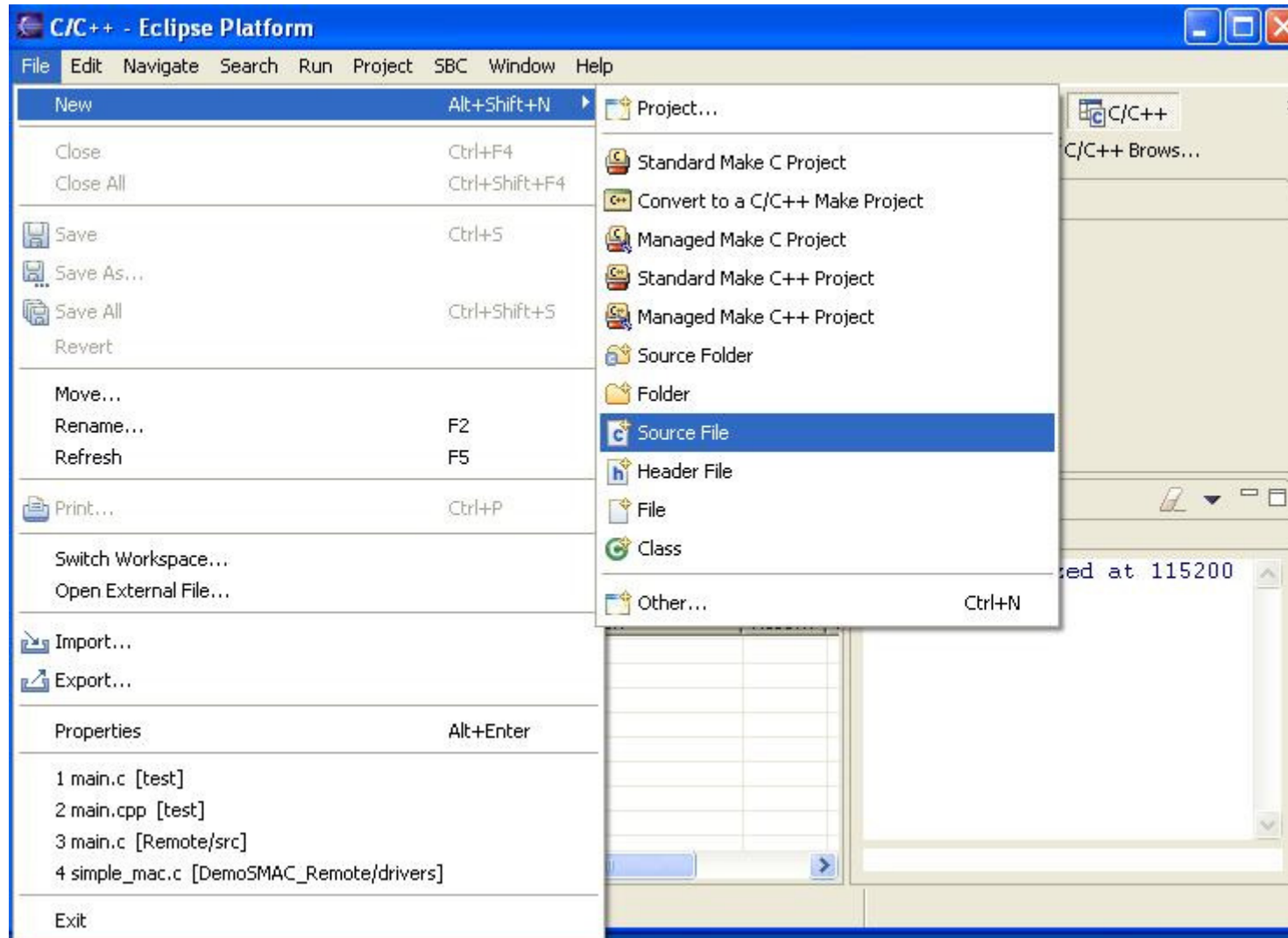
Give a name for new project



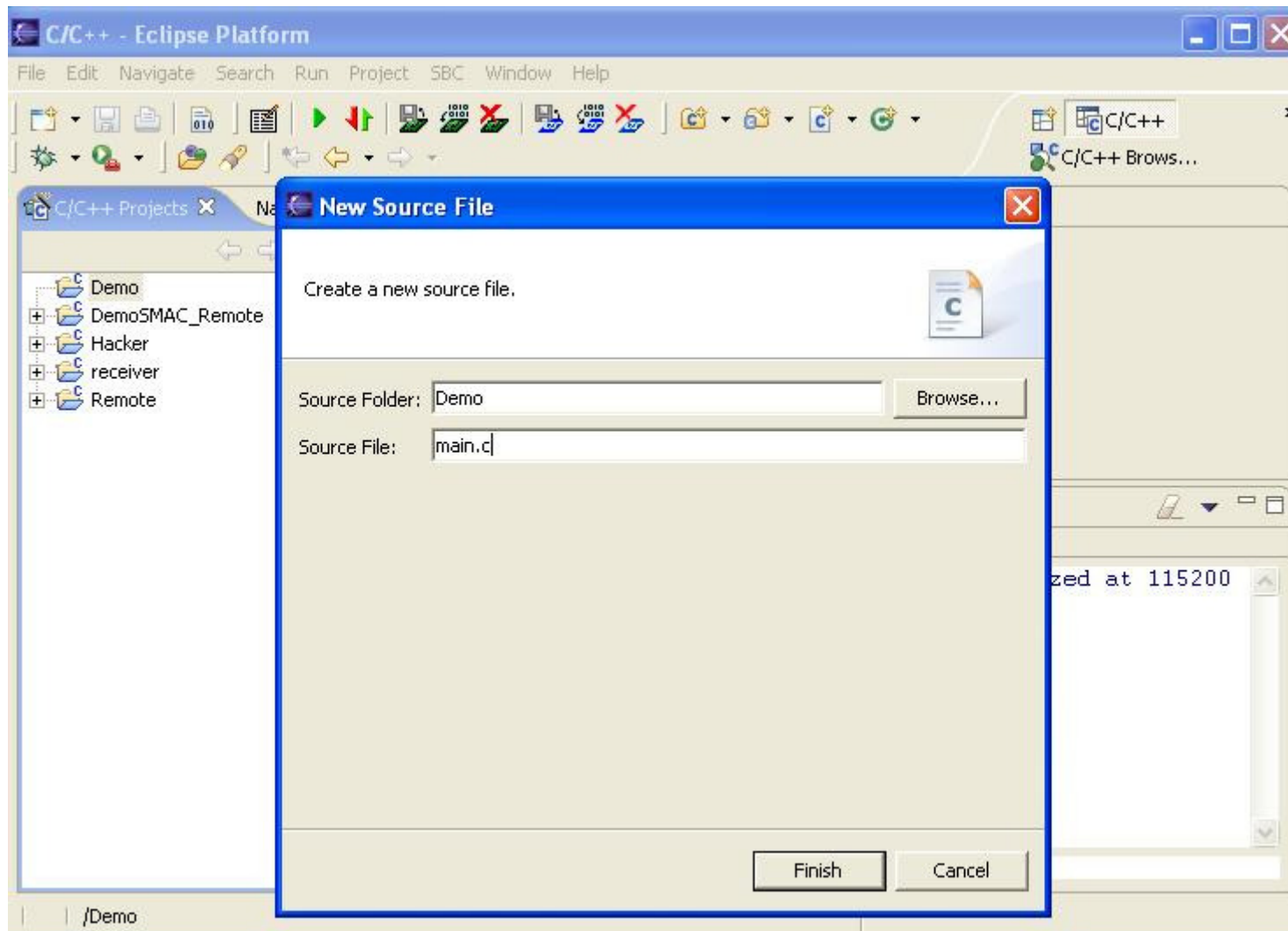
Finish the demo project



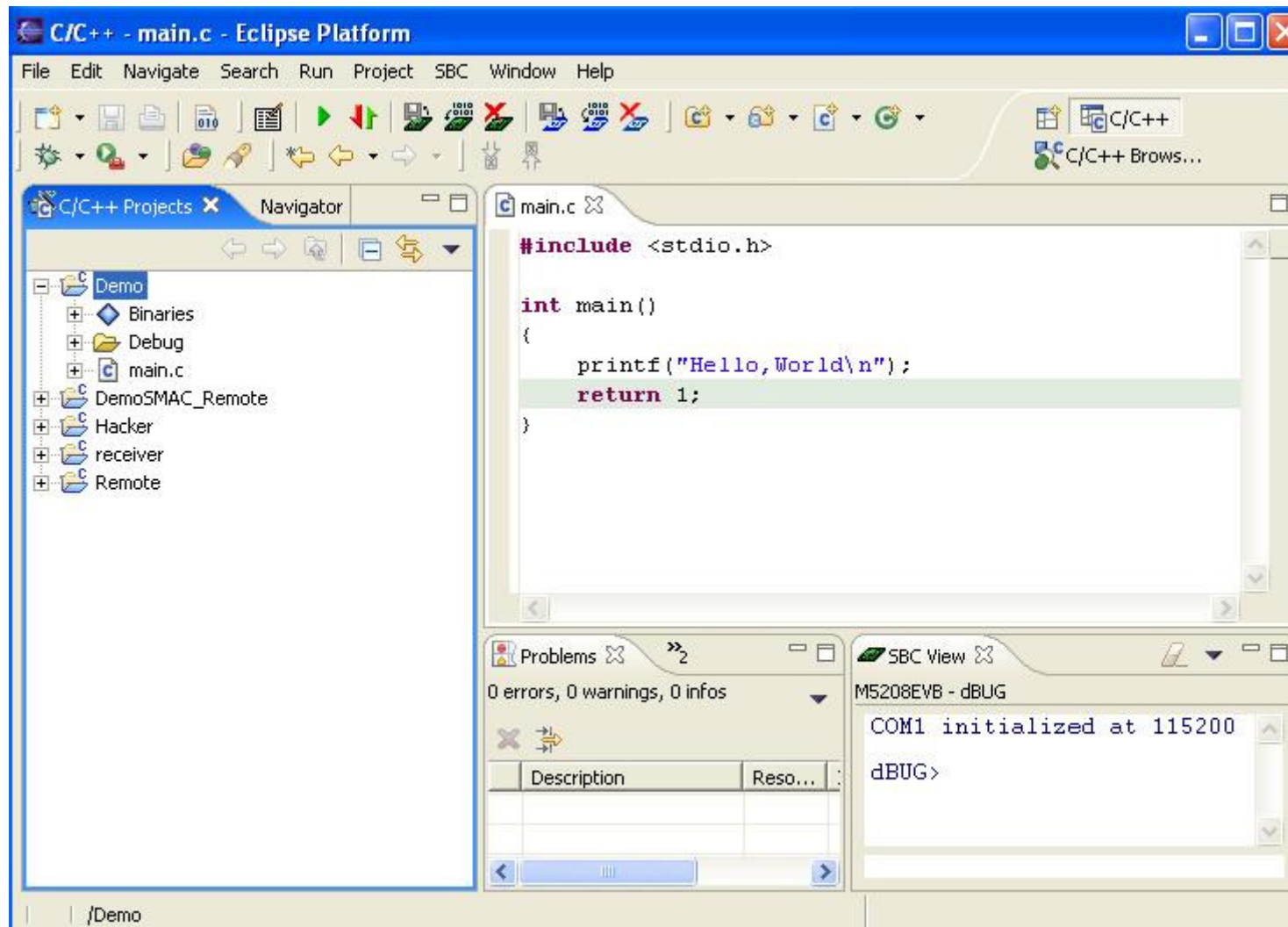
Create C source file



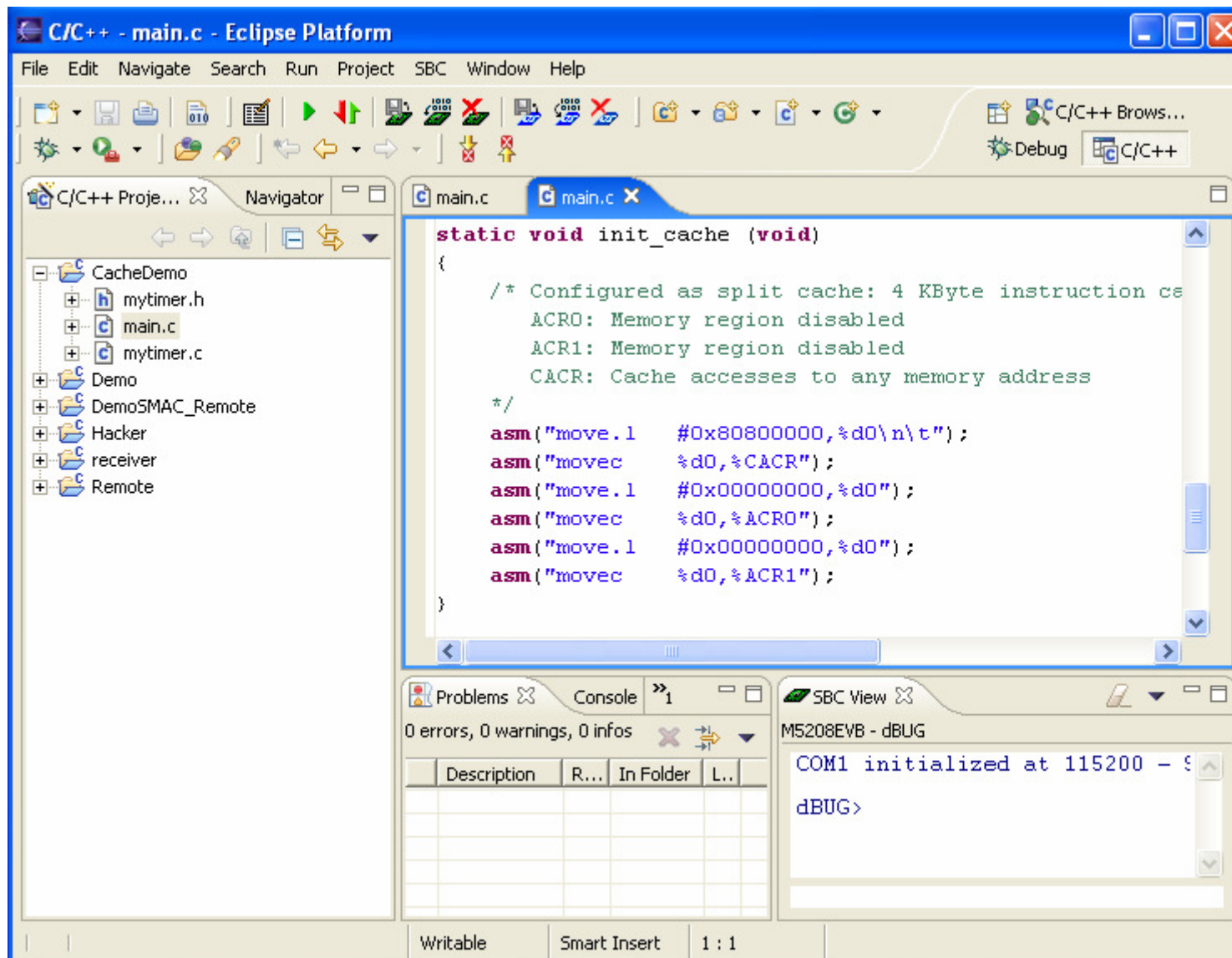
Give a name for source file



Edit the source file



Embed assembly code to C file

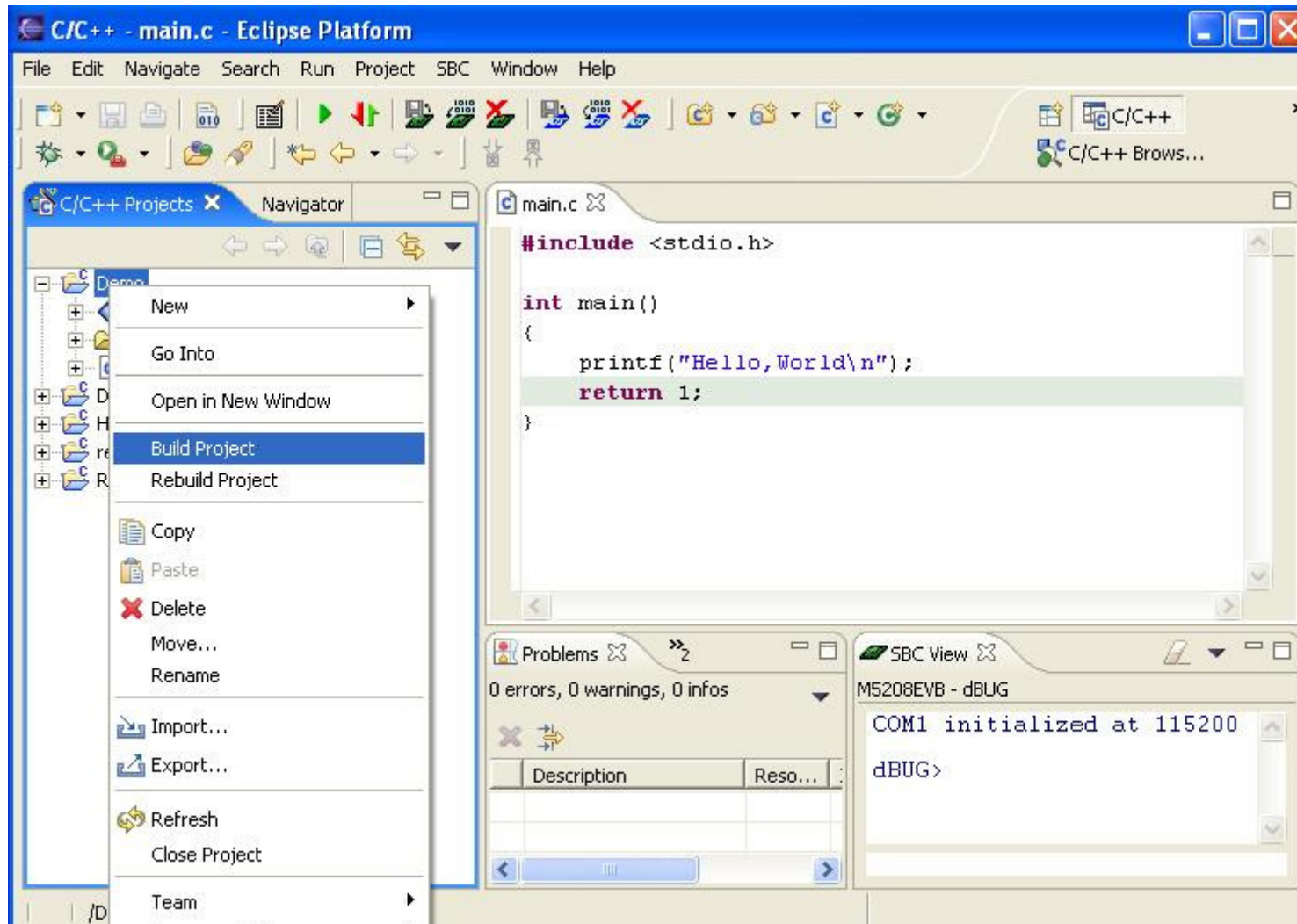


The screenshot shows the Eclipse IDE interface for a C/C++ project named 'CacheDemo'. The main editor window displays the file 'main.c' with the following code:

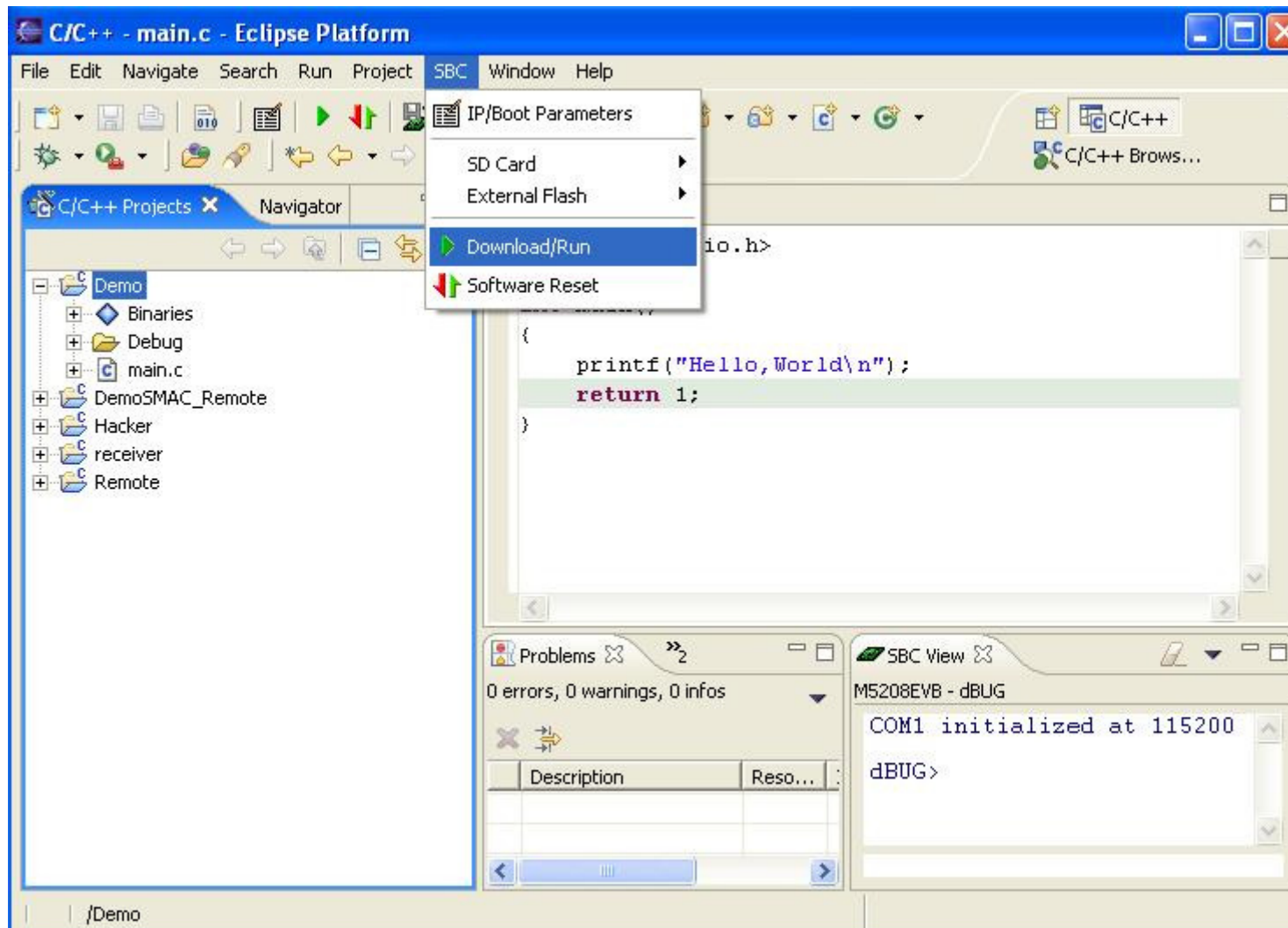
```
static void init_cache (void)
{
    /* Configured as split cache: 4 KByte instruction ca
    ACRO: Memory region disabled
    ACR1: Memory region disabled
    CACR: Cache accesses to any memory address
    */
    asm("move.l    #0x80800000,%d0\n\t");
    asm("movec     %d0,%CACR");
    asm("move.l    #0x00000000,%d0");
    asm("movec     %d0,%ACRO");
    asm("move.l    #0x00000000,%d0");
    asm("movec     %d0,%ACR1");
}
```

The bottom of the IDE shows the 'Problems' view with 0 errors, 0 warnings, and 0 infos. The 'Console' view shows the output of the program: 'COM1 initialized at 115200 - dBUG>'. The 'SBC View' shows the target device 'MS208EVB - dBUG'. The status bar at the bottom indicates 'Writable', 'Smart Insert', and '1 : 1'.

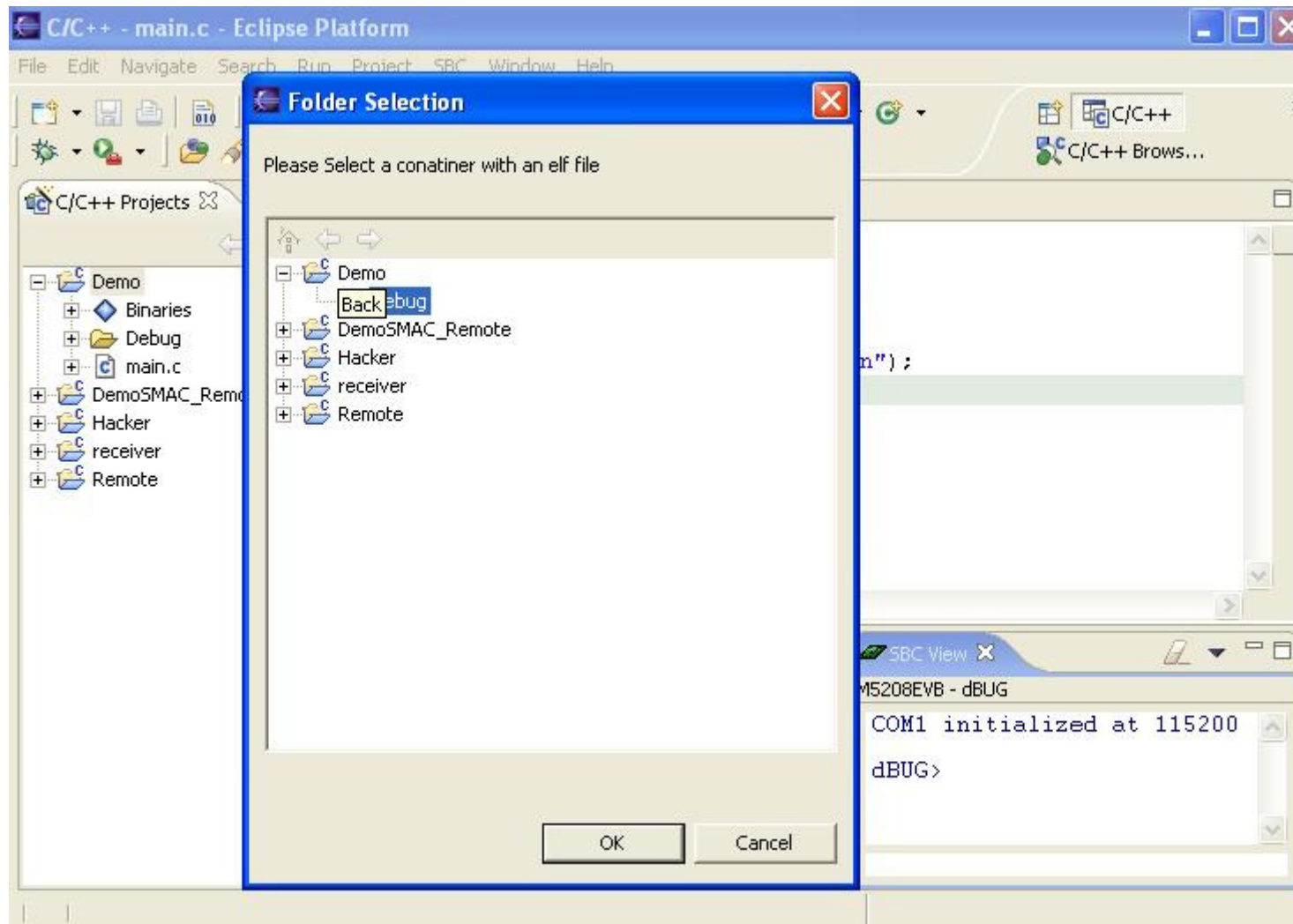
Compile the demo project



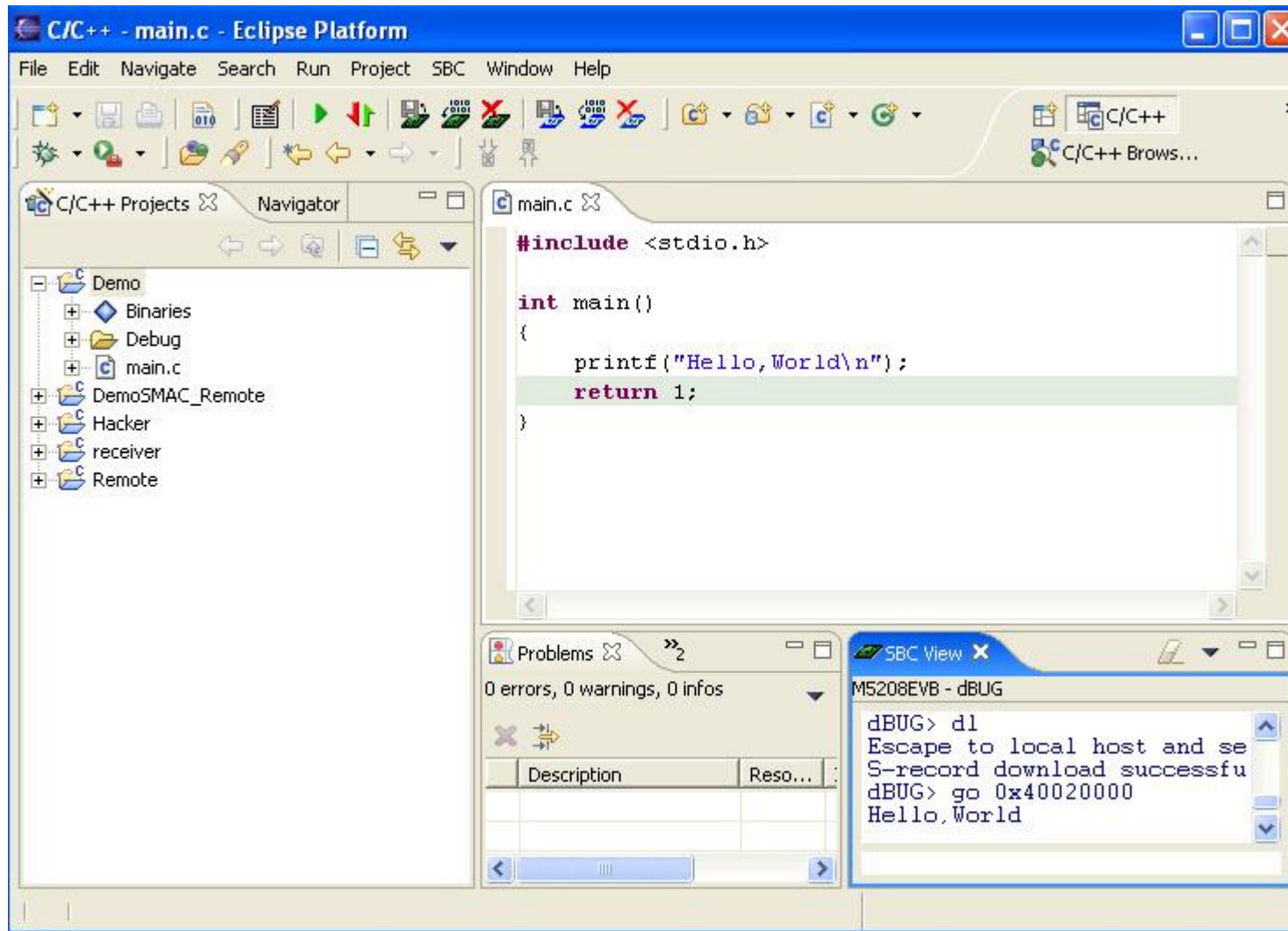
Download and run demo



Choose a object code to run



Show the results



Result Window